



II 2 G c Ex e II T3

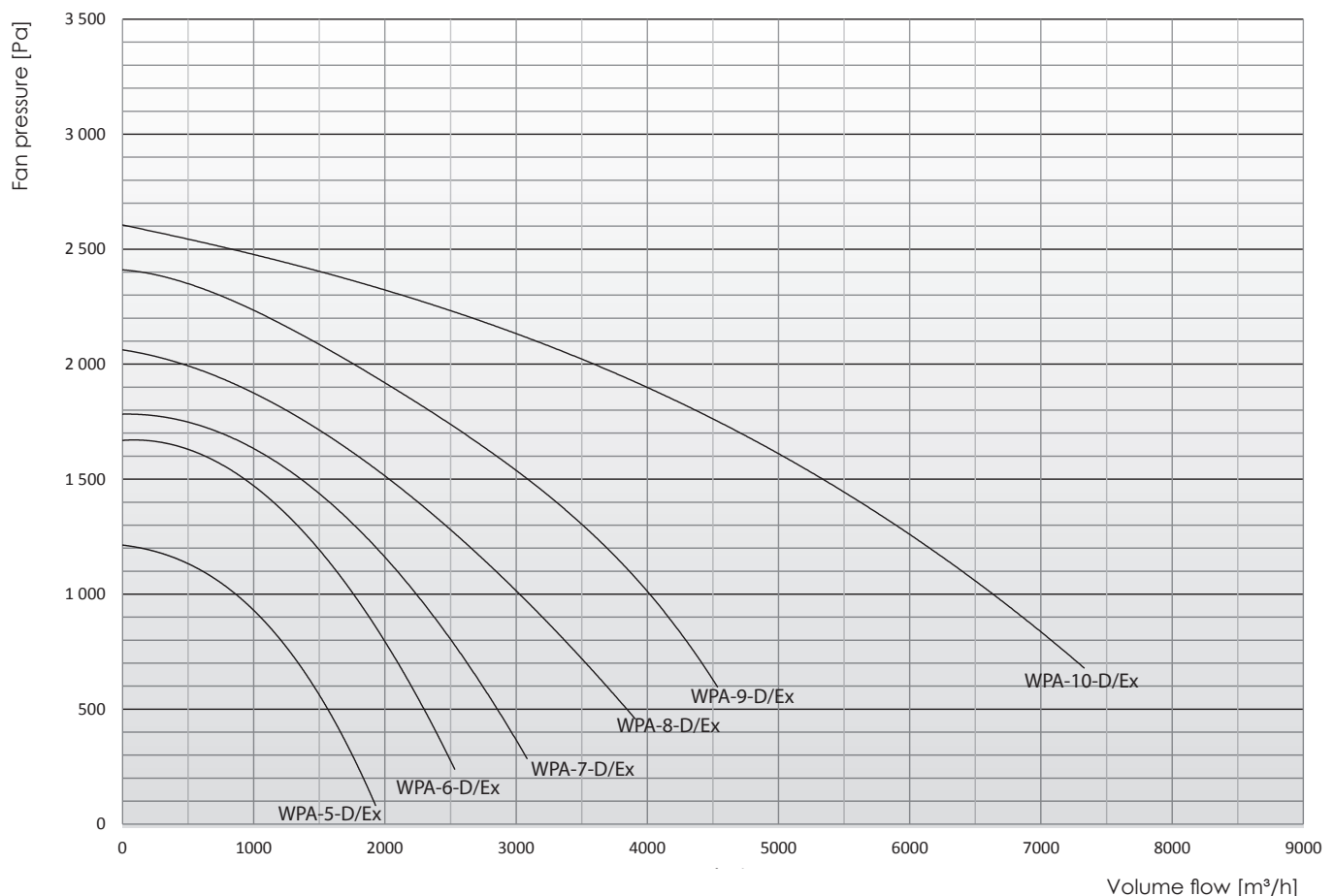
Application

WPA-...-D/Ex roof fans are meant for use in areas of explosion risk, where explosive atmosphere can occur, i.e. mixture of flammable substances in a form of gases, vapours and mists with the air.

Due to increased fan pressure, it is possible to apply the fans with local exhausts, filtering units and also with a ventilation system of significant flow resistances. The fan can be used in installation with a roof discharge unit of a required dynamic rise.

Structure

The fan consists of spiral housing, explosion-proof motor, radial impeller – mounted directly on the motor shaft and sheet metal motor cover. Radial impeller blades resemble the profile of an aircraft wing. They provide low fan noise level. The inlet is provided with a flange for mounting a fan on the roof or a wall bracket. A characteristic feature of the fan damper placed at the outlet of the spiral casing. For safety reasons, the inlet and outlet are protected by protective grille. On the inlet side it is recommended to install silencers TK (see the technical data table).





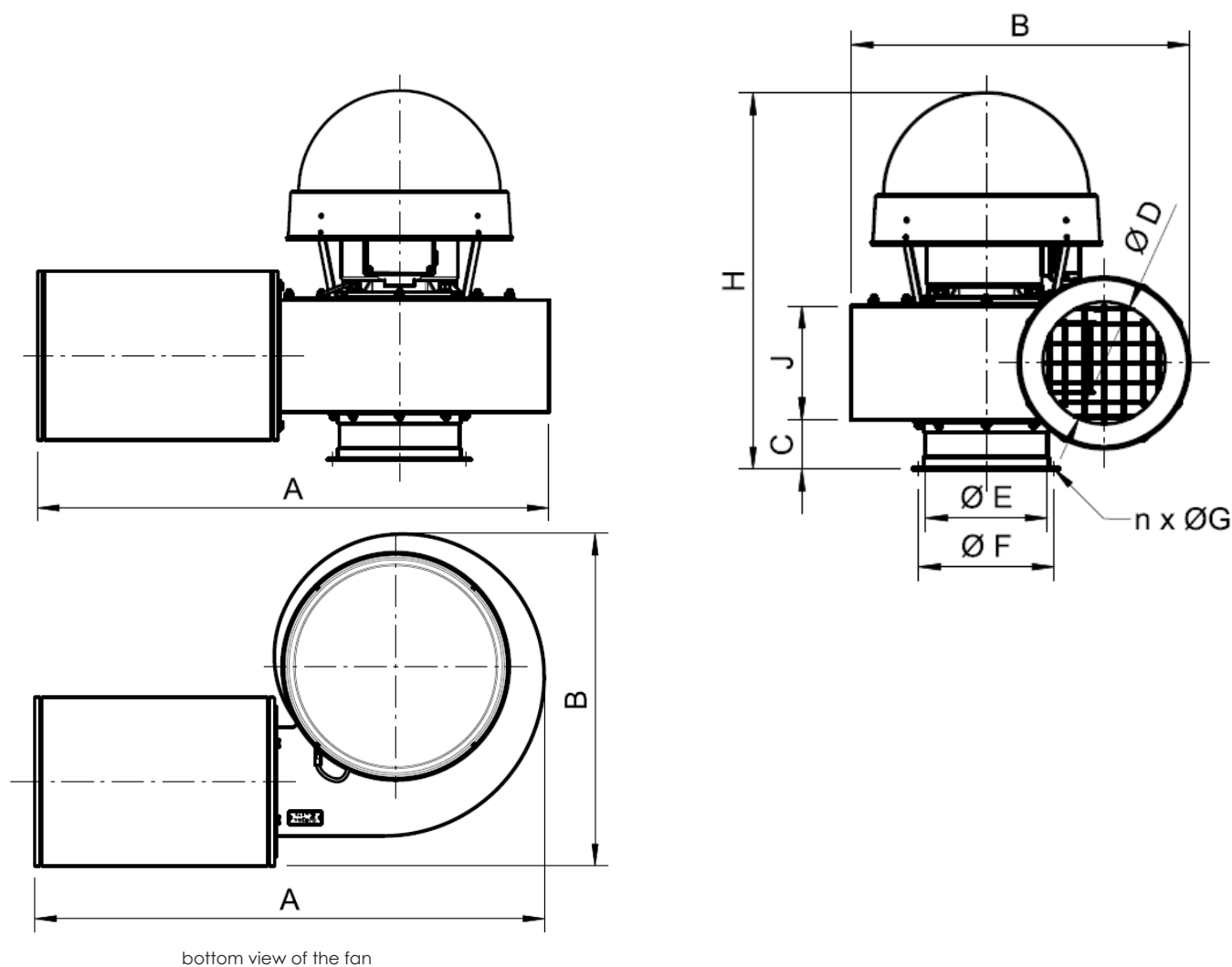
Technical data

Type	Part.No	Synchronous rotations [1/min]	Supply voltage [V]	Motor rate [kW]	Ingress protection IP	Acoustic pressure level [dB(A)] from the distance of		Maximum volume flow [m³/h]	Maximum vacuum [Pa]	Weight [kg]
						1 m	5 m			
WPA-5-D/Ex	808W83	3000	3 × 400	0,55	54	73 / 67*	59 / 53*	1900	1250	23
WPA-6-D/Ex	808W84	3000	3 × 400	0,75	54	78 / 75*	64 / 61*	2500	1700	26
WPA-7-D/Ex	808W85	3000	3 × 400	1,1	54	81 / 74*	67 / 60*	3100	1800	31
WPA-8-D/Ex	808W86	3000	3 × 400	1,5	54	82 / 78*	68 / 64*	3900	2050	38
WPA-9-D/Ex	808W87	3000	3 × 400	2,2	54	86 / 82*	72 / 68*	4500	2400	45
WPA-10-D/Ex	808W88	3000	3 × 400	4,0	54	87 / 81*	73 / 67*	7400	2600	74

* Measurement has been carried out with the additional TK L=500 mm silencer installed at the fan inlet.

1. Maximum temperature of the forwarded air +60°C. Maximum temperature in the work area +40°C.

2. Maximum dustiness of the transported air should not exceed 0,3 g/m³.



Dimensions

Type	A [mm]	B [mm]	C [mm]	D [mm]	E [mm]	F [mm]	n [pieces]	G [mm]	H [mm]	J [mm]
WPA-5-D/Ex	905	525	60	160	160	194	6	6,5	500	140
WPA-6-D/Ex	915	550	60	200	160	194	6	6,5	535	155
WPA-7-D/Ex	965	570	60	200	160	194	6	6,5	535	155
WPA-8-D/Ex	990	600	60	200	200	224	8	9,0	535	155
						234	6	6,5		
						246	8	9,0		
WPA-9-D/Ex	1030	665	60	200	200	224	8	9,0	605	155
						234	6	6,5		
						246	8	9,0		
WPA-10-D/Ex	1050	675	100	250	250	275	8	9,0	720	232