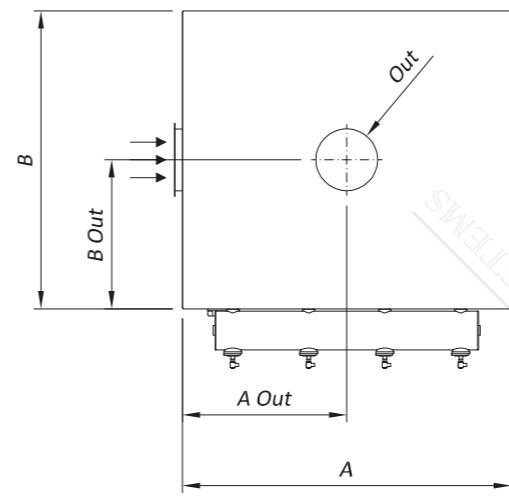
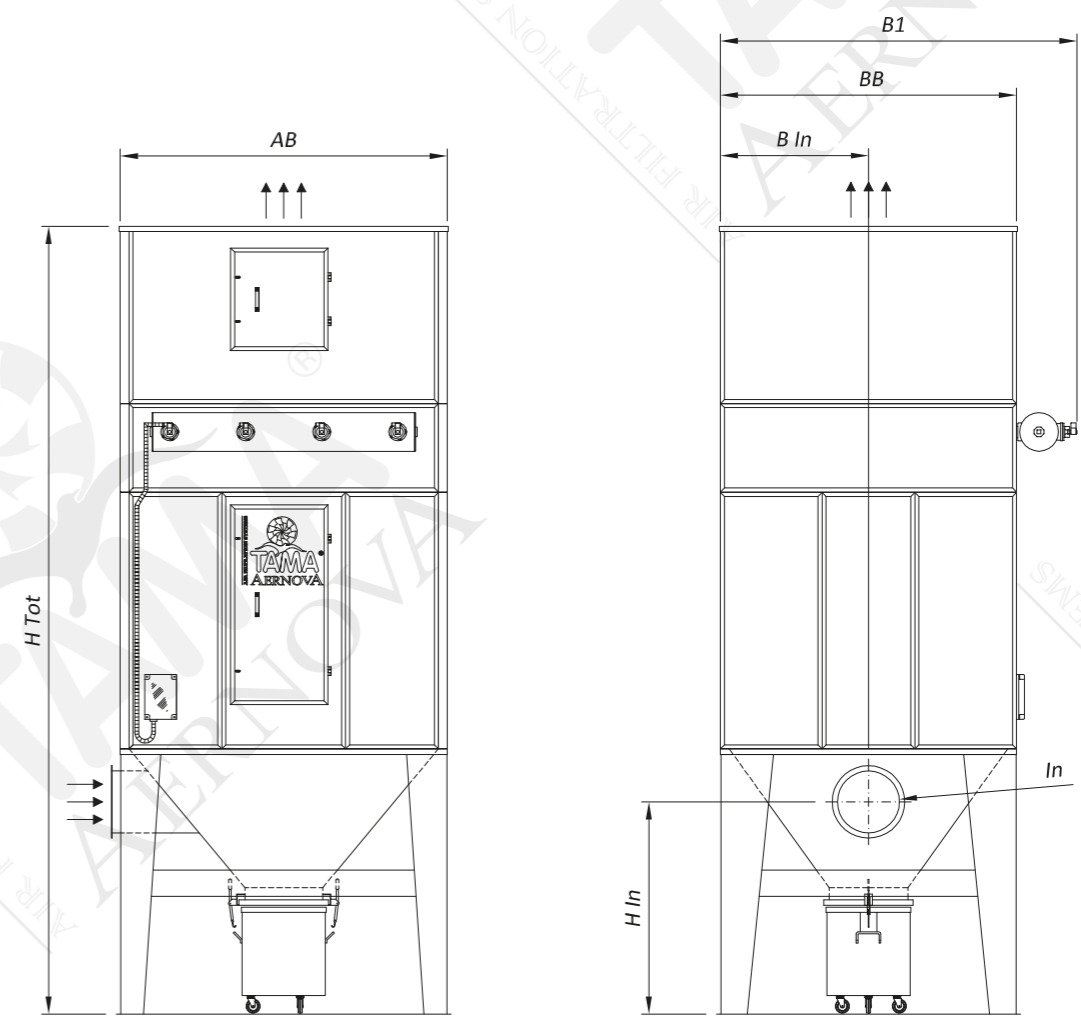


TECHNICAL SPECIFICATIONS					DIMENSIONS												
Model	Filtering surface	Number of filtering elements	Number of cleaning valves	Compressed air consumption	A	B	B1	AB*	BB*	H Tot	In	B In	H In	Out	A Out*	B Out*	Weight
	[m2]				[-]	[-]	[Nl/activ]	[mm]	[mm]	[mm]	[mm]	[mm]	[mm]	[mm]	[mm]	[mm]	
NFB145-02x0207	10	4	2	87	700	700	1020	850	950	3058	Ø120	350	790	Ø150	425	475	425
NFB145-02x0210	15	4	2	87	700	700	1020	1000	1100	3458	Ø150	350	775	Ø180	500	550	475
NFB145-02x0212	18	4	2	87	700	700	1020	1000	1100	3658	Ø150	350	775	Ø200	500	550	500
NFB145-02x0407	21	8	2	87	700	1180	1500	1000	1180	3158	Ø180	590	760	Ø220	500	590	600
NFB145-02x0410	30	8	2	87	700	1180	1500	1100	1250	3558	Ø200	590	750	Ø280	550	625	650
NFB145-02x0412	37	8	2	87	700	1180	1500	1100	1250	3758	Ø220	590	740	Ø300	550	625	675
NFB145-03x0307	24	9	3	87	940	940	1260	940	940	3358	Ø180	470	960	Ø220	470	470	575
NFB145-03x0310	34	9	3	87	940	940	1260	1100	1250	3758	Ø220	470	940	Ø280	550	625	650
NFB145-03x0312	41	9	3	87	940	940	1260	1100	1250	3958	Ø250	470	925	Ø315	550	625	675
NFB145-03x0407	31	12	3	87	940	1180	1500	1100	1250	3458	Ø200	590	950	Ø280	550	625	700
NFB145-03x0410	45	12	3	87	940	1180	1500	1100	1250	3758	Ø250	590	925	Ø315	550	625	725
NFB145-03x0412	55	12	3	87	940	1180	1500	1200	1400	4158	Ø280	590	910	Ø350	600	700	825
NFB145-04x0407	42	16	4	87	1180	1180	1500	1180	1180	3458	Ø250	590	925	Ø315	590	590	750
NFB145-04x0410	61	16	4	87	1180	1180	1500	1200	1400	3958	Ø300	590	900	Ø380	600	700	850
NFB145-04x0412	73	16	4	87	1180	1180	1500	1200	1400	4158	Ø315	590	892	Ø420	600	700	875
NFB145-04x0507	52	20	4	217	1180	1420	1780	1180	1420	3758	Ø280	710	1210	Ø350	590	710	950
NFB145-04x0510	76	20	4	217	1180	1420	1780	1180	1420	4258	Ø315	710	1192	Ø420	590	710	1025
NFB145-04x0512	91	20	4	217	1180	1420	1780	1180	1420	4458	Ø350	710	1175	Ø450	590	710	1075
NFB145-05x0507	66	25	5	217	1420	1420	1780	1420	1420	3958	Ø300	710	1200	Ø400	710	710	1050
NFB145-05x0510	95	25	5	217	1420	1420	1780	1420	1470	4258	Ø350	710	1175	Ø480	710	735	1125
NFB145-05x0512	114	25	5	217	1420	1420	1780	1420	1550	4458	Ø400	710	1150	Ø520	710	775	1175
NFB145-05x0607	79	30	5	217	1420	1660	2020	1420	1660	3958	Ø315	830	1192	Ø420	710	830	1175
NFB145-05x0610	114	30	5	217	1420	1660	2020	1420	1660	4258	Ø400	830	1150	Ø520	710	830	1250
NFB145-05x0612	137	30	5	217	1420	1660	2020	1420	1660	4558	Ø450	830	1125	Ø580	710	830	1300
NFB145-08x0407	84	32	8	217	2140	1180	1540	2140	1180	4058	Ø350	590	1275	Ø450	1070	590	1175
NFB145-08x0410	121	32	8	217	2140	1180	1540	2140	1550	4358	Ø420	590	1240	Ø520	1070	775	1300
NFB145-08x0412	146	32	8	217	2140	1180	1540	2140	1550	4658	Ø450	590	1225	Ø580	1070	775	1400
NFB145-08x0507	105	40	8	217	2140	1420	1780	2140	1420	4058	Ø380	710	1260	Ø500	1070	710	1375
NFB145-08x0510	152	40	8	217	2140	1420	1780	2140	1420	4458	Ø450	710	1225	Ø600	1070	710	1475
NFB145-08x0512	183	40	8	217	2140	1420	1780	2140	1420	4858	Ø500	710	1200	Ø650	1070	710	1575
NFB145-08x0607	126	48	8	217	2140	1660	2020	2140	1660	4058	Ø420	830	1240	Ø550	1070	830	1500
NFB145-08x0610	182	48	8	217	2140	1660	2020	2140	1660	4658	Ø500	830	1200	Ø650	1070	830	1650
NFB145-08x0612	219	48	8	217	2140	1660	2020	2140	1660	4858	Ø550	830	1175	Ø710	1070	830	1725
NFB325-02x0207	33-43***	4	2	217	960	960	1320	1100	1250	3458	Ø250	480	925	Ø315	550	625	800
NFB325-02x0210	48-63***	4	2	217	960	960	1320	1200	1400	3958	Ø300	480	900	Ø380	600	700	875
NFB325-02x0212	58-76***	4	2	217	960	960	1320	1200	1400	4158	Ø315	480	892	Ø420	600	700	900
NFB325-03x0207	50-65***	6	3	217	1390	960	1320	1390	1400	3958	Ø300	480	1200	Ø380	695	700	975
NFB325-03x0210	72-94***	6	3	217	1390	960	1320	1390	1500	4258	Ø350	480	1175	Ø480	695	750	1025
NFB325-03x0212	87-113***	6	3	217	1390	960	1320	1390	1550	4458	Ø400	480	1150	Ø520	695	775	1075
NFB325-04x0207	67-87***	8	4	217	1820	960	1320	1820	1500	3958	Ø350	480	1175	Ø450	910	750	1125
NFB325-04x0210	97-125***	8	4	217	1820	960	1320	1820	1550	4258	Ø420	480	1140	Ø550	910	775	1175
NFB325-04x0212	117-151***	8	4	217	1820	960	1320	1820	1550	4558	Ø450	480	1125	Ø600	910	775	1275
NFB325-03x0307	75-98***	9	3	217	1390	1390	1750	1390	1390	3958	Ø380	695	1160	Ø480	695	695	1150
NFB325-03x0310	109-141***	9	3	217	1390	1390	1750	1390	1550	4358	Ø450	695	1125	Ø580	695	775	1225
NFB325-03x0312	131-170***	9	3	217	1390	1390	1750	1390	1550	4658	Ø480	695	1110	Ø630	695	775	1300
NFB325-04x0307	100-130***	12	4	217	1820	1390	1750	1820	1390	4058	Ø420	695	1140	Ø550	910	695	1325
NFB325-04x0310	145-188***	12	4	217	1820	1390	1750	1820	1390	4558	Ø520	695	1090	Ø650	910	695	1400
NFB325-04x0312	175-227***	12	4	217	1820	1390	1750	1820	1390	4758	Ø550	695	1075	Ø710	910	695	1475
NFB325-05x0307	125-163***	15	5	217	2250	1390	1750	2250	1390	4358	Ø480	695	1310	Ø630	1125	695	1500
NFB325-05x0310	181-235***	15	5	217	2250	1390	1750	2250	1390	4758	Ø580	695	1260	Ø750	1125	695	1600
NFB325-05x0312	219-283***	15	5	217	2250	1390	1750	2250	1850	5058	Ø630	695	1235	Ø800	1125	925	1775
NFB325-04x0407	134-173***	16	4	347	1820	1820	2220	1820	1820	4158	Ø500	910	1100	Ø630	910	910	1700
NFB325-04x0410	193-251***	16	4	347	1820	1820	2220	1820	1820	4558	Ø600	910	1050	Ø750	910	910	1800
NFB325-04x0412	233-302***	16	4	347	1820	1820	2220	1820	1820	4858	Ø650	910	1025	Ø850	910	910	1925
NFB325-05x0407	167-217***	20	5	347	2250	1820	2220	2250	1820	4458	Ø550	910	1275	Ø710	1125	910	1950
NFB325-05x0410	242-313***	20	5	347	2250	1820	2220	2250	1820	4858	Ø650	910	1225	Ø850	1125	910	2075
NFB325-05x0412	291-378***	20	5	347	2250	1820	2220	2500	1820	4958	Ø710	910	1195	Ø950	1250	910	2200

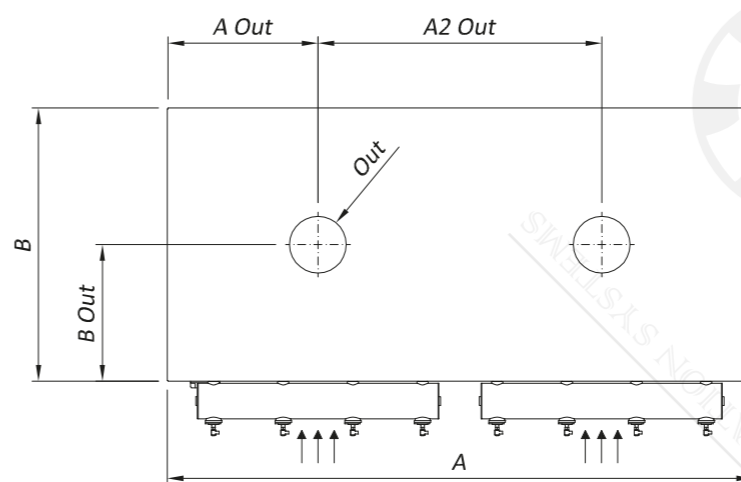
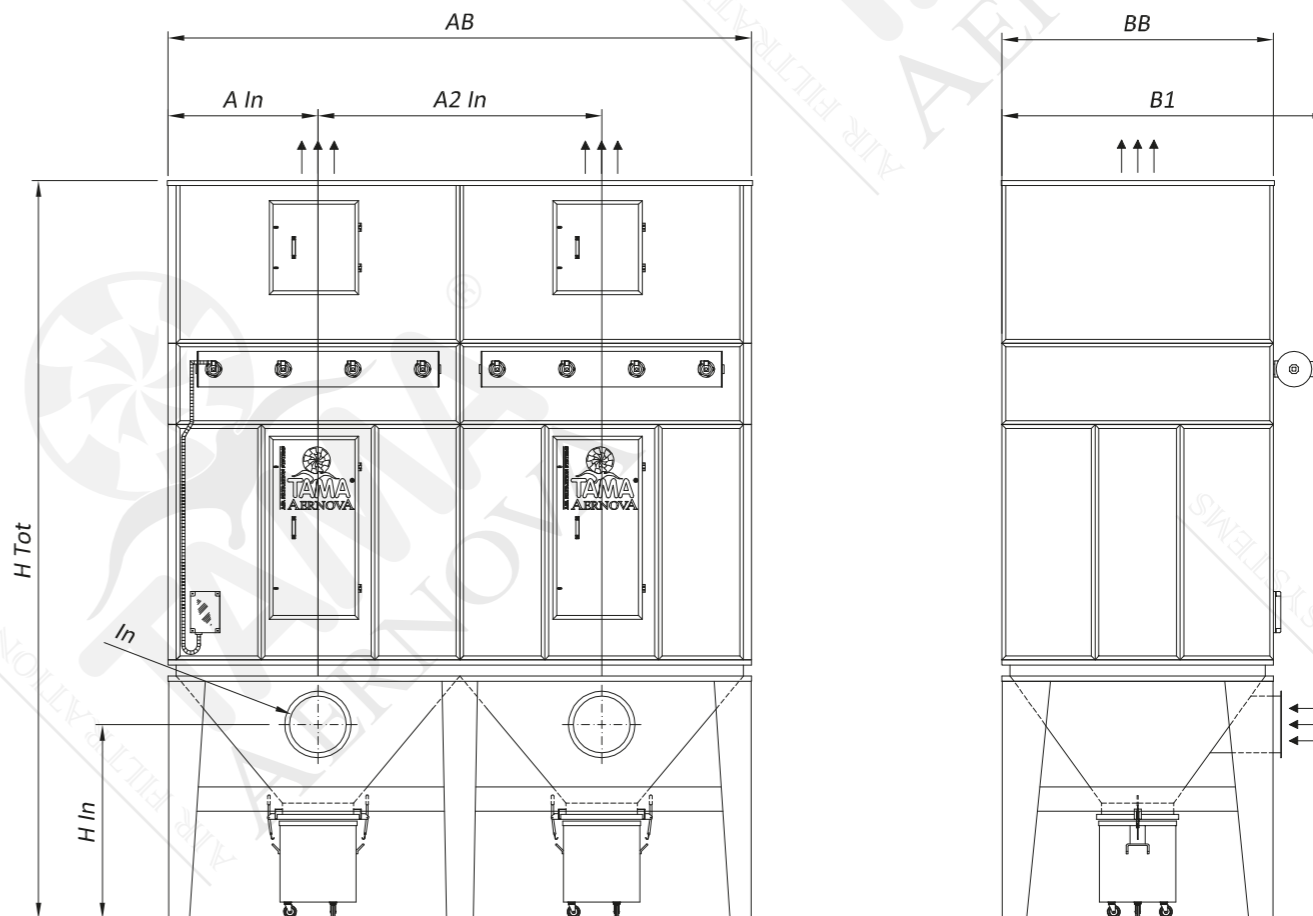
* Dimensions referred to fan box | *** Filtering surface for cartridges with 175 pleats



TECHNICAL SPECIFICATIONS		
Max working negative pressure	Pa	5000
Working Temperature	°C	-10<T<60
Electric control panel feeding	230 V AC 50Hz	
Cartridge cleaning system	pulse-jet	
Compressed air tank working pressure	bar	5
Average level of sound pressure LpA_1.5 m (UNI EN ISO 3746:1997)*	dB(A)	<80

* The level of sound pressure is affected by the background noise, the reverberation of the environment, the presence of other sound sources and the positioning of the machine near reflecting surfaces. In the installations common conditions it is necessary to use corrective coefficients.

TECHNICAL SPECIFICATIONS						DIMENSIONS														
Model	Filtering surface	Number of filtering elements	Number of hoppers	Number of cleaning valves	Compressed air consumption	A	B	B1	AB*	BB*	H Tot	In	A In	A2 In	H In	Out	A Out*	A2 Out*	B Out*	Weight
	[m ²]	[-]	[-]	[-]	[Nl/activ]	[mm]	[mm]	[mm]	[mm]	[mm]	[mm]	[mm]	[mm]	[mm]	[mm]	[mm]	[mm]	[mm]	[mm]	[kg]
NFB145-12x0507	157	60	2	12	217	3220	1420	1780	3220	1420	4058	2 x (Ø315)	817	1585	1292	2 x (Ø420)	830	1560	710	1975
NFB145-12x0510	227	60	2	12	217	3220	1420	1780	3220	1420	4558	2 x (Ø400)	817	1585	1250	2 x (Ø520)	830	1560	710	2150
NFB145-12x0512	274	60	2	12	217	3220	1420	1780	3220	1850	4858	2 x (Ø450)	817	1585	1225	2 x (Ø580)	830	1560	925	2375
NFB145-16x0407	168	64	2	16	87	4180	1180	1500	4180	1550	4358	2 x (Ø350)	1057	2065	1475	2 x (Ø450)	1070	2040	775	2200
NFB145-16x0410	243	64	2	16	87	4180	1180	1500	4180	1700	4758	2 x (Ø420)	1057	2065	1440	2 x (Ø520)	1070	2040	850	2425
NFB145-16x0412	292	64	2	16	87	4180	1180	1500	4180	1850	5058	2 x (Ø450)	1057	2065	1425	2 x (Ø580)	1070	2040	925	2600
NFB145-14x0507	183	70	2	14	217	3700	1420	1780	3700	1420	4358	2 x (Ø350)	937	1825	1375	2 x (Ø450)	950	1800	710	2250
NFB145-14x0510	265	70	2	14	217	3700	1420	1780	3700	1850	4758	2 x (Ø420)	937	1825	1340	2 x (Ø550)	950	1800	925	2525
NFB145-14x0512	320	70	2	14	217	3700	1420	1780	3700	1850	4958	2 x (Ø480)	937	1825	1310	2 x (Ø600)	950	1800	925	2625
NFB145-12x0607	189	72	2	12	217	3220	1660	2020	3220	1660	4258	2 x (Ø350)	817	1585	1275	2 x (Ø480)	830	1560	830	2200
NFB145-12x0610	273	72	2	12	217	3220	1660	2020	3220	1660	4658	2 x (Ø450)	817	1585	1225	2 x (Ø550)	830	1560	830	2375
NFB145-12x0612	329	72	2	12	217	3220	1660	2020	3220	1660	4658	2 x (Ø480)	817	1585	1210	2 x (Ø630)	830	1560	830	2425
NFB145-16x0507	210	80	2	16	217	4180	1420	1780	4180	1420	4458	2 x (Ø380)	1057	2065	1460	2 x (Ø500)	1070	2040	710	2500
NFB145-16x0510	303	80	2	16	217	4180	1420	1780	4180	1850	4858	2 x (Ø450)	1057	2065	1425	2 x (Ø600)	1070	2040	925	2800
NFB145-16x0512	366	80	2	16	217	4180	1420	1780	4180	1420	4958	2 x (Ø500)	1057	2065	1400	2 x (Ø650)	1070	2040	710	2775
NFB145-14x0607	220	84	2	14	217	3700	1660	2020	3700	1660	4358	2 x (Ø400)	937	1825	1350	2 x (Ø500)	950	1800	830	2450
NFB145-14x0610	318	84	2	14	217	3700	1660	2020	3700	1660	4758	2 x (Ø480)	937	1825	1310	2 x (Ø600)	950	1800	830	2650
NFB145-14x0612	384	84	2	14	217	3700	1660	2020	3700	1660	4858	2 x (Ø520)	937	1825	1290	2 x (Ø680)	950	1800	830	2750
NFB145-16x0607	252	96	2	16	217	4180	1660	2020	4180	1660	4458	2 x (Ø420)	1057	2065	1440	2 x (Ø550)	1070	2040	830	2700
NFB145-16x0610	364	96	2	16	217	4180	1660	2020	4180	1660	4758	2 x (Ø500)	1057	2065	1400	2 x (Ø650)	1070	2040	830	2875
NFB145-16x0612	439	96	2	16	217	4180	1660	2020	4180	1660	4958	2 x (Ø550)	1057	2065	1375	2 x (Ø710)	1070	2040	830	3025
NFB145-20x0507	262	100	2	20	217	5140	1420	1780	5140	1700	4358	2 x (Ø420)	1297	2545	1340	2 x (Ø550)	1310	2520	850	2975
NFB145-20x0510	379	100	2	20	217	5140	1420	1780	5140	1420	4658	2 x (Ø520)	1297	2545	1290	2 x (Ø680)	1310	2520	710	3050
NFB145-20x0512	457	100	2	20	217	5140	1420	1780	5140	1700	4858	2 x (Ø580)	1297	2545	1260	2 x (Ø750)	1310	2520	850	3300
NFB325-06x0407	201-260***	24	2	6	347	2680	1820	2220	2680	1820	4458	2 x (Ø420)	682	1315	1440	2 x (Ø550)	695	1290	910	2150
NFB325-06x0410	290-376***	24	2	6	347	2680	1820	2220	2680	1820	4758	2 x (Ø520)	682	1315	1390	2 x (Ø650)	695	1290	910	2275
NFB325-06x0412	350-453***	24	2	6	347	2680	1820	2220	2680	1820	4958	2 x (Ø550)	682	1315	1375	2 x (Ø710)	695	1290	910	2375
NFB325-08x0407	268-347***	32	2	8	347	3540	1820	2220	3540	1820	4258	2 x (Ø500)	897	1745	1300	2 x (Ø630)	910	1720	910	2700
NFB325-08x0410	387-501***	32	2	8	347	3540	1820	2220	3540	1820	4658	2 x (Ø600)	897	1745	1250	2 x (Ø750)	910	1720	910	2850
NFB325-08x0412	466-604***	32	2	8	347	3540	1820	2220	3540	1820	4958	2 x (Ø650)	897	1745	1225	2 x (Ø850)	910	1720	910	3025
NFB325-12x0407	401-520***	48	3	12	347	5260	1820	2220	5260	1820	4358	3 x (Ø500)	893	1736	1300	3 x (Ø630)	910	1720	910	3675
NFB325-12x0410	580-752***	48	3	12	347	5260	1820	2220	5260	1820	4658	3 x (Ø600)	893	1736	1250	3 x (Ø750)	910	1720	910	3875
NFB325-12x0412	699-906***	48	3	12	347	5260	1820	2220	5260	1820	4958	3 x (Ø650)	893	1736	1225	3 x (Ø850)	910	1720	910	4100



TECHNICAL SPECIFICATIONS		
Max working negative pressure	Pa	5000
Working Temperature	°C	-10<T<60
Electric control panel feeding	230 V AC 50Hz	
Cartridge cleaning system	pulse-jet	
Compressed air tank working pressure	bar	5
Average level of sound pressure LpA_1.5 m (UNI EN ISO 3746:1997)*	dB(A)	<80

* The level of sound pressure is affected by the background noise, the reverberation of the environment, the presence of other sound sources and the positioning of the machine near reflecting surfaces. In the installations common conditions it is necessary to use corrective coefficients.

* Dimensions referred to fan box
*** Filtering surface for cartridges with 175 pleats